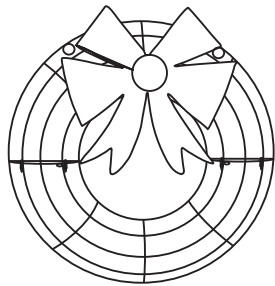




Item # 1000007232  
Model # W12L0568

## USE AND CARE GUIDE

### 3 ft Green Sparkling Tinsel Twinkle Wreath



#### THANK YOU

We appreciate the trust and confidence you have placed in Home Accents through the purchase of this Tinsel Thread Wreath with Red Bow. We strive to continually create quality products designed to enhance your home. Visit us online to see our full line of products available for your home improvement needs. Thank you for choosing Home Accents!



Questions, problems, missing parts? Before returning to the store, call Home Accents Holiday Customer Service 8 a.m.-6 p.m., EST, Monday-Friday

1-877-527-0313

HOMEDEPOT.COM

## Safety Information

### IMPORTANT SAFETY INSTRUCTIONS

When using electrical products, basic precautions should always be followed. Please read and follow all safety instructions prior to use.

#### READ AND FOLLOW ALL SAFETY INSTRUCTIONS.

- Do not use seasonal products outdoors unless marked suitable for indoor and outdoor use.
- When products are used for outdoor applications, connect the product to a Ground Fault Circuit Interrupting (GFCI) outlet. If one is not provided, contact a qualified electrician for proper installation.
- This seasonal-use product is not intended for permanent installation or use.
- Unplug the product when leaving the house, when retiring for the night, or if left unattended.
- Do not use this product for other than its intended purpose.
- Do not hang ornaments or other objects from cord, wire, or light string.
- Do not let the lamps rest on the supply cord or on any wire.
- This product is equipped with push-in type lamps. Do not twist the lamps.
- This product employs overload protection (fuse). A blown fuse indicates an overload or short-circuit situation. If the fuse blows, unplug the product from the outlet. Also, unplug any additional strings or products that may be attached to the product. Replace the fuse as per the instructions listed in this manual (follow product marking for proper fuse rating), and check the product. If the replacement fuse blows, a short-circuit may be present and the product should be discarded.

#### SAVE THESE INSTRUCTIONS.

**WARNING:** To avoid the risk of fire, burns, personal injury, and electric shock, this product should not be used as a toy and should be kept away from small children.

**WARNING:** To avoid the risk of fire, burns, or personal injury, do not cover the product with cloth, paper, or any material not part of the product when in use.

**CAUTION:** Do not place or mount the product near gas or electric heaters, fireplaces, candles, or other similar sources of heat.

**CAUTION:** Grasp the plug to insert or remove from the power source. Do not unplug by pulling on the cord.

**CAUTION:** The lighting string on this product is rated at 14.4 Watts (0.12 Amps). Do not overload. Do not connect to another lighting string, decorative outlet, or other product.

**CAUTION:** Before you use or re-use this product, inspect it carefully. Discard if the product has cuts, damage, frayed wire insulation on cords, cracks in the socket enclosures, loose connections, or exposed copper wire.

**CAUTION:** Do not secure the wiring of the product with staples or nails, or place on sharp hooks.

**CAUTION:** To avoid the risk of overheating, replace burned-out lamps promptly. Use 4.0/5.0/2.0 Volt, 0.08/0.09/0.04 Watt LED lamps only.

**CAUTION:** Do not close doors or windows on the product or extension cords, as this may damage the wire insulation.

**CAUTION:** Risk of fire. This product does not contain lamp shunts, which allow the product to operate if one lamp burns out. Replace lamps only with the spare lamps provided with this product.

## Pre-Assembly

### PLANNING ASSEMBLY

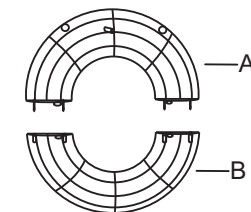
Carefully remove all the parts from the box, and place them on a flat surface. Read the entire manual prior to assembly, and identify all the parts included in the package against the parts list. If any parts are missing or damaged, do not attempt assembly, but contact our customer service center.

### HARDWARE INCLUDED



Part	Description	Quantity
BB	Fuse	4
CC	Replacement Bulb	6
DD	Plastic Tie	3

### PACKAGE CONTENTS

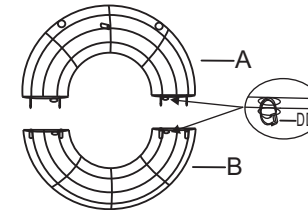


Part	Description	Quantity
A	Upper part of wreath	1
B	Bottom part of wreath	1
C	Red Bow	1

## Assembly

### 1 Assembling the Wreath

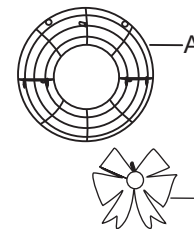
- Insert the Upper part of wreath (A) into the Bottom part of wreath (B) and secure with plastic tie (DD).



## Assembly

### 2 Assembling the Red Bow

- Insert the pins on the Red Bow (C) into the tube on the upper part of Wreath (A).



### 3 Finishing Assembly

- Hang the Wreath on the wall or other proper place.
- Connect the power cords to a GFCI power outlet.

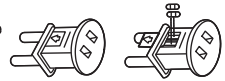


## Maintenance

**CAUTION:** Ensure the product is disconnected from the power source before attempting to service. Use only approved fuses. Do not replace the attachment plug, as it contains a safety device that should not be removed.

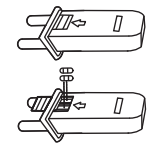
### REPLACING FUSES

- Grasp the plug and remove from the receptacle or other outlet device. Do not unplug by pulling on the cord.
- Open the fuse compartment by sliding the fuse access cover on the plug towards the blades, as shown.
- Carefully remove the fuse(s), and replace with the fuse(s) (BB) provided.
- Close the fuse compartment.



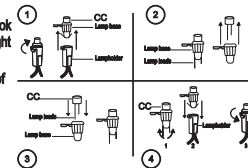
### REPLACING FUSES OF POWER CORD PLUG

- Grasp the plug and remove from the receptacle or other outlet device. Do not unplug by pulling on the cord.
- Open the fuse compartment by sliding the fuse access cover on the plug towards the blades, as shown.
- Carefully remove the fuse(s), and replace with the fuse(s) (BB) provided.
- Close the fuse compartment.



### REPLACING BULBS

- Grasp the plug and remove from the receptacle or other outlet device. Do not unplug by pulling on the cord.
- Unlock the burned out LED bulb by lifting the hook and pulling both the bulb and plastic base straight out of the bulb holder. Do not twist bulbs.
- Pull the old bulb and plastic base straight out of the lamp holder.
- Remove the bulb from the plastic base by straightening the bulb wires and pulling the bulb out.
- Insert the wires of the replacement bulb (CC) down through the plastic base, and press the bulb (CC) into the base. Bend the wires upward.
- Insert the replacement bulb (CC) and base into the socket. Do not twist.
- Lock the LED bulb.



## Care and Cleaning

- When finished with use, carefully remove the product from its location, including trees, branches, or bushes. This helps to avoid any undue strain or stress on the product conductors, connections, and wires.
- If the product is placed on a tree, the tree should be well maintained, well secured, and stable.
- Wipe the unit with a damp cloth and allow the unit to dry before storing. Store the product neatly in a cool, dry location protected from sunlight.

UL Model No. L-091S